

MIDI FUSE BLOCKS GANGABLE 58V



58V

Part Number	Description
04980900	Midi Fuse Block with M3 In-Board Mounting
04980903	Midi Fuse Block with M6 Mounting Tabs

NEW

Voltage: 58VDC

Rating Continuous: 150A **Rating Max:** 200A

Body: Black glass filled thermoplastic.

Cover: Included. Black glass filled thermoplastic.

Hardware: Includes hex nuts & lock washers.

Studs: M5 threaded studs.

Features: Gangable

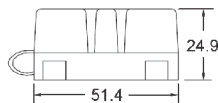
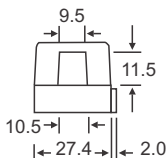
Pack Size: 1, 10, 100

Notes: The holders feature a stackable side design to allow multiple holders to be joined together. Fuse is not included.

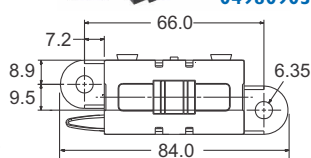
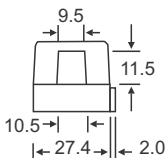
Approvals: RoHS



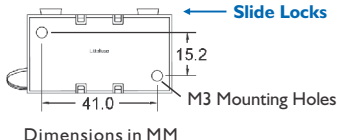
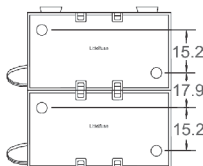
04980900



04980903



Gang Mount Setup



Dimensions in MM

RELATED PRODUCTS:



32V Midi Fuse
(see p.24)



58V Midi Fuse
(see p.24)

MIDI FUSE BLOCK GANGABLE 65V

The BHR series fuse holder is specially designed for use with DC fuse in automotive equipment and road vehicles. It works with both 32V and 58V Midi fuses. The holder is built with special automotive grade materials to withstand high fault currents and temperatures.

Part Number
BHR030-15-M5

Voltage: 65VDC

Rating: 200A

Body: Black PA + GF VO

Cover: Black PA + GF VO

Operating Temperature: -40 to +125°C

Hardware: Includes hex nuts & lock washers.

Studs: M5 threaded stainless steel.

Features: Gangable. Cover with window feature.

Pack Size: 1, 10, 100

Notes: The holders feature a stackable side design to allow multiple holders to be joined together.

Fuse is not included.

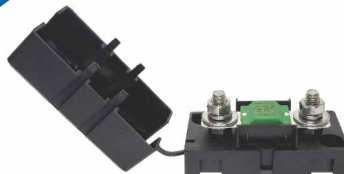
Approvals: RoHS



adler

NEW

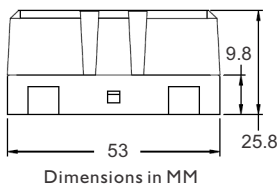
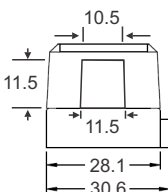
65V



Fuse window



Side locks



Dimensions in MM

RELATED PRODUCTS:



32V Midi Fuse
(see p.24)



58V Midi Fuse
(see p.24)