

BATTERY DISCONNECT CIRCUIT BREAKER SERIES 53



The Series 53 Branch Disconnect / Circuit Breaker incorporates into a single device both traditional battery disconnect switching (non-engine) and circuit protection. This unique combination of features in a single rotary switch allows OEM cost savings by eliminating the added components, material and labour of a separate battery switch and circuit breaker / fuse. For the end user or maintenance personnel, the Series 53 provides a quick means to disconnect traditional downstream circuit(s) while preventing unintentional battery drain or allowing for disconnected battery power during storage and/or maintenance.



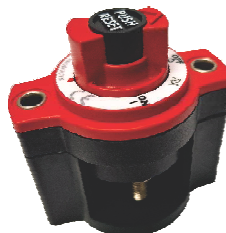
Features

- One piece terminal stud design never loosens over time.
- 3 Mounting options. Front panel, rear panel & surface mount.
- Ignition protected and weatherproof (IP66 & IP67).
- Designed and manufactured in USA.

Part Number	Ampere Rating
533-P0-010	10A
533-P0-015	15A
533-P0-020	20A
533-P0-030	30A
533-P0-035	35A
533-P0-040	40A
533-P0-045	45A
533-P0-050	50A
533-P0-060	60A
533-P0-070	70A
530-320-2	Standoff NEW



530-320-2
(With Inserts)



533 Series With Standoff
Surface Mount



533 Series
Panel Mount



Rear Panel Mount

Voltage: 32VDC.

I.R. Per SAE J553 & UL 1077* (U3) at 14 & 28VDC, 1.5kA @ 14VDC per ABYC (SAE J553 & UL 1077* U3), 3kA @ 14VDC.

Operating Temperature: -40°C to 85°C

Mounting Options (3): Rear & Front panel mount. Surface mount with standoff.

Mounting eyelet hole size #10 with #8-32 nuts pre-installed.

Ingress Protection Rating: IP66 / IP67. (IEC 60529).

Ignition Protection: ISO 8846*, USCG, ABYC, UL 1500* and SAE J1171

Dielectric Strength: 2000VAC minimum UL 107. **Housing:** Thermoplastic.

Shock, Vibration, Corrosion: MIL-STD-202, UL 1077*, UL 107*

Endurance: Per SAE J553 (100 overload trip cycles at 400% of rated current at 28VDC).

Min / Max Ultimate Trip: Must Hold 100% of rated current at 25°C/77°F. Must Trip at 135% of rated current within 1 hour. Unique / specific higher ambient calibrations are also available.

Inrush Capacity: The Series 53 will not trip at 35X rated capacity for 1/2 cycle (0.008 sec.).

Note: This product is not rated for an engine starter circuit. *Tested per methods of standard.

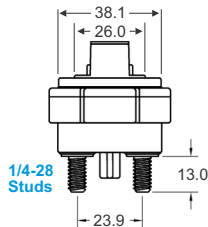
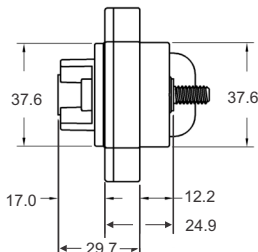
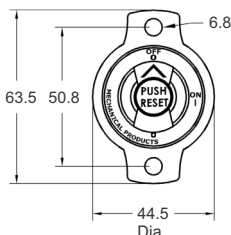
Approvals: UL 1077, SAE J553, ABYC, CE

Series 53 Disconnect Function

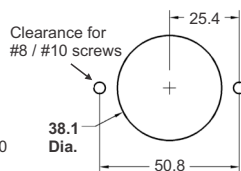
Switch ON, Continuity - Breaker is active and circuit is active.

Switch ON, NO Continuity - Breaker is tripped. Push the PUSH TO RESET button to reset the breaker.

Switch OFF, NO Continuity - Breaker is not operable. Circuit is Off.



Dimensions in MM



Panel Mount Cutout
Front or Rear