

SINGLE & DUAL STUD TYPE JUNCTION BLOCKS

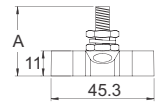
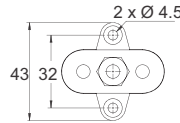
PROLEG

48V

Heavy-duty ground or power connection points for DC circuits. Compact profile with insulated base. Ideal for creating a centralized power distribution or grounding point.

Single Stud JBSM

Part Number	Body Colour	Stud Size	Stud Amp Rating	Height A (mm)
JBSM6B	Black	M6	100A	30
JBSM6R	Red	M6	100A	30
JBSM8B	Black	M8	200A	31
JBSM8R	Red	M8	200A	31
JBSM10B	Black	M10	300A	34
JBSM10R	Red	M10	300A	34



Dimensions in MM

Voltage: 12-48VDC.

Body: Nylon, glass fibre reinforced.

Studs & Hardware: Stainless steel (included).

Dual Stud With Link Option JBDM / JBDBM

Dual Stud Part Number	Dual Stud With Link Part Number	Body Colour	Stud Size	Stud Amp Rating	Height A (mm)
JBDM6B	JBDBM6B	Black	2 x M6	100A	30
JBDM6R	JBDBM6R	Red	2 x M6	100A	30
JBDM8B	JBDBM8B	Black	2 x M8	200A	31
JBDM8R	JBDBM8R	Red	2 x M8	200A	31

Voltage: 12-48VDC.

Link Rating: 80A max.

Link Material: Nickel plated brass.

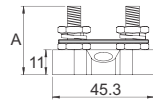
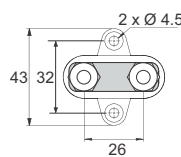
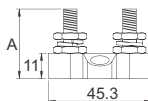
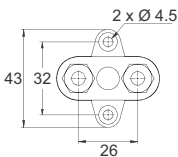
Body: Nylon, glass fibre reinforced.

Studs & Hardware: Stainless steel (included).



Dual Stud

Dual Stud With Link



Dimensions in MM

Dual Stud With Stud Barrier JBDFM

Part Number	Body Colour	Stud Size	Stud Amp Rating	Height A (mm)
JBDFM8B	Black	2 x M8	100A	32.5
JBDFM10B	Black	2 x M10	200A	35.5
JBDFM810B	Black	1 x M8 + 1 x M10	300A	35.5

Feature → Includes stud barrier.

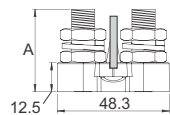
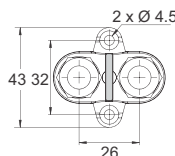


Voltage: 12-48VDC.

Body: Nylon, glass fibre reinforced.

Studs & Hardware: Stainless steel (included).

Notes: Provides a termination point for extending the length of harnesses or other conductors. Use dual entry cable insulators to protect from accidental short circuits.



Dimensions in MM

POWER DIST.